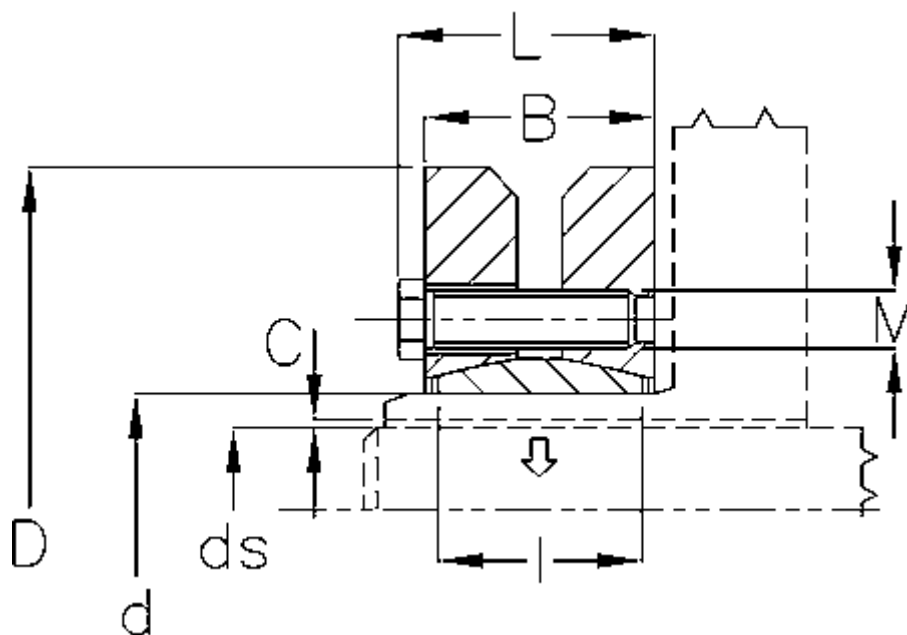


Varenummer: 438000068

Beskrivelse: Rota-fix spændelement SD 68

Mål



B mm	= 30
C maks.	= 0,048
d H8 mm	= 68
D mm	= 115
ds mm	= 50
F kN aksialkraft	= 100
L mm	= 34
l mm	= 23

M mm	= M6
T Nm drejningsmoment	= 2000
Ts Nm boltetilspændingsmoment	= 12